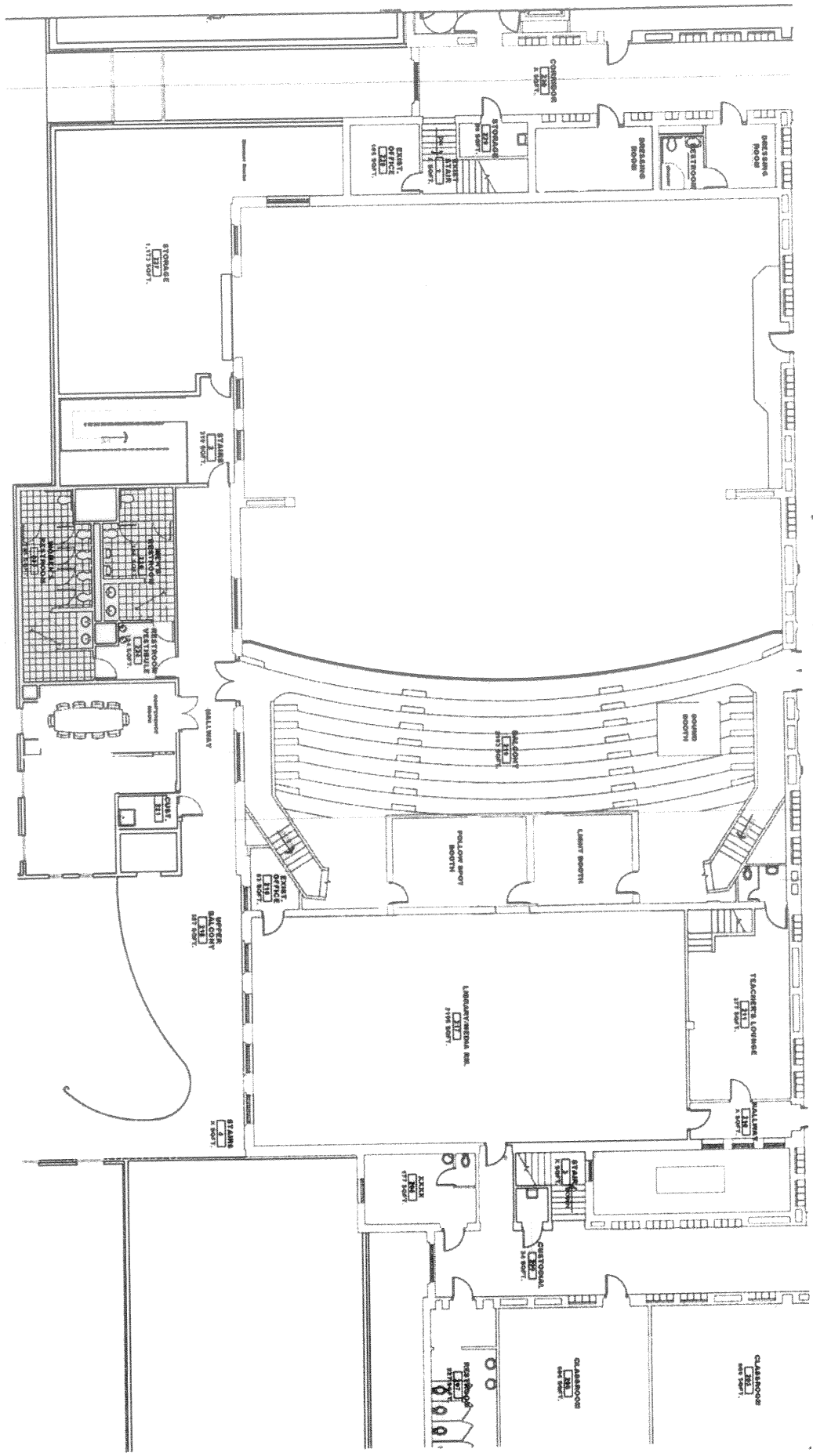


Merryman Performing Arts Center - 2nd Floor



Stage:

Proscenium stage with open recessed orchestra pit.
Access from auditorium to stage is by steps and proscenium doors stage right and left.

Dimensions:

(Be aware that if equipment is planned to fit to close tolerances, designers and/or the technical coordinator must verify all dimensions in the space.)

Proscenium:

Height: 17'4"

Width: 40'

Centerline to :

Locking rail (stage left): 37'

Wall (stage right): 39'

Loading doors (stage right) 66'

Curtain line to:

Rear wall of stage: 27'

Lip of stage: 11'6"

Upstage Wall:

Total Width: 51'6"

SR end to SR wall: 13'6"

SL end of SL locking rail: 10'10"

Crossover space behind wall: 9'6" wide. Clearance Height: 10'3"

Behind upstage wall on stage right is the door leading to school hallway for access to dressing rooms, rest rooms and gymnasium. Other exit into school building is USL

Stage Floor:

Masonite over wood. (painted flat black)

Orchestra Pit:

Orchestra pit cannot be covered for use as stage apron and cannot be used for audience seating

Access to pit is steps at right and left sides leading to auditorium.

Pit floor is 7'2" below stage floor

Pit floor to pit "roof" under the stage 6'

Pit floor is 4' below auditorium floor.

Pit extends under stage lip 3'10"

Depth of pit at center: 7'9"

Width of pit 42'2"

Pit railing is 1'9" tall with open spindles.

Stage lip to curved pit railing: 4' at center. 19.5" at ends

Audio jacks in orchestra pit: 12 total (m1-m12), Stage monitors 1 & 2, (3 receptacles each), Intercom A&B (3 receptacles each)

Electrical Edison outlets: 38 total.

Fly System:

Manufactured by: J R Clancy. Installed by Heartland Scenic Studio, Omaha, NE.
Manual single purchase steel counterweight system with 34 linesets
Six are dedicated electrical batons. (Raceways use stage pin electrical connectors.)

Batons are 1 3/4" pipe
High trim: 33'6"
Low trim: 5'

Locking rail is located Stage Left.

Arbors: maximum capacity approx. 1200 pounds

Counterweights: cast iron, approx 18 pounds each

Note: Fly system is to be operated only by persons trained in the safe operation of a counterweight fly system.

Main Drape

Main drape is operated from the deck Stage Left.

Drape may be flown in and out (guillotine) or traveled across stage with center overlap.

Drape is located on lineset #2 with matching border on lineset #1

Stock stage drapery:

1 cherry colored main drape
1 cherry colored main valance
4 pairs black legs
4 black borders
1 black traveler on lineset #17 (midstage)
1 white cyclorama on lineset # 34
1 projection screen 144" H x 194"W on lineset #7

Loading Area:

Access to stage is by two 8' overhead doors. 10' tall on south side of building, west of main entrance. Access is all on ground level.

Hydraulic Lift is built into floor inside one of the 8' doors. The hinged ramp will not reach a vehicle that cannot fit inside the 8' doorway.

Marshalling area between outside doors and stage is 25' to stage, and 29' wide.

Access from marshalling area to stage right is by overhead door 9'10" high, 11'10" wide and by a 7' door 2'11" wide.

Marshalling area has monitor speakers and wall intercom system.

Technical Director's office (currently used for storage):

Located in marshalling area, with door and glass window.

Has monitor speaker and wall intercom system.

Company Power:

One 400 amp service and one 200 amp service available down stage right.