

**BOYS**

2009-2010

**TENNIS**

**MANUAL**



**NEBRASKA SCHOOL ACTIVITIES ASSOCIATION**  
**500 Charleston, P.O. Box 85448**  
**Lincoln, Nebraska 68501-5448**  
**(402)489-0386**

Attention: Tennis Coaches and Athletic Directors read this Manual and keep it for reference purposes. It contains essential information regarding the operation of tennis competitions.

This Tennis Manual has been prepared and designed to provide general information for use in the administration of NSAA tennis competition. It will serve as a guide to participating schools. All information will be included in the Manual except such supplementary information, which may be found on the NSAA website. The regulations in this Manual shall be considered official unless the schools are notified of a change.

Associate Director, Debra Velder, is the NSAA staff member responsible for administering tennis and would be the person inquiries regarding this activity should be directed to. She may be contacted at [dvelder@nsaahome.org](mailto:dvelder@nsaahome.org).

**KEY DATES**

Start of Practice: Monday, August 17  
Date of First Contest: Thursday, August 27  
Class B District Tennis Entries Due – Monday, September 28  
Class A State Entries Due: Thursday, October 8  
Class B District Tournaments – Friday, October 9  
Seeding: Monday, October 12  
State Contest: Thursday-Friday, October 15-16

**INTERNET INFORMATION**

The Nebraska School Activities Association's home page on the Internet at the following address:  
**<http://www.nsaahome.org>**

The NSAA office and its staff members all can be reached via the Internet via e-mail address:  
[dvelder@nsaahome.org](mailto:dvelder@nsaahome.org) -- to Debra Velder for tennis inquiries  
[nsaa@nsaahome.org](mailto:nsaa@nsaahome.org) -- to the NSAA office in general.

It is important that you check the NSAA website frequently throughout the season.

All persons involved with tennis have the responsibility to know how NSAA Bylaws pertain to this activity. The NSAA Yearbook contains a complete listing of Bylaws for each sport.

**INDEX**

- KEY DATES ..... 1
- INTERNET INFORMATION ..... 1
- SPORTSMANSHIP GUIDELINES ..... 3
- BYLAWS GOVERNING TENNIS ..... 3-5
  - Cell Phones ..... 5
  - End of Season for Outside Participation ..... 5
  - Organized Practice ..... 5
  - Clinics ..... 5
  - Participation ..... 6
  - Amateur Guidelines ..... 6
  - Non-School Participation ..... 7
  - Eligibility for District/State Competition ..... 7
  - Individual Instruction ..... 7
  - Supervision ..... 8
- FUTURE DATES..... 8
- APPROVED RULINGS ..... 8
  - Official Rules ..... 8
  - Match Limit ..... 8
  - Tie-Breaker ..... 8
  - Rotation of Service ..... 9
  - Inclement Weather Procedure – Regular Season ..... 9
  - Classification ..... 9
  - Season Records ..... 9
- DISTRICT/STATE ENTRY INFORMATION ..... 10
  - Alternate Players ..... 10
  - Seeding ..... 10
- CLASS B DISTRICT TOURNAMENT INFORMATION ..... 11
- DISTRICT AND STATE INFORMATION ..... 11
  - Format ..... 11
  - Warm-Up ..... 11
  - Time Between Sets ..... 11
  - Time Between Matches ..... 11
  - Meet Director ..... 11
  - Coaches ..... 11
  - Conduct Rule ..... 12
  - Injury Time Out ..... 12
  - Default Rule ..... 12
  - Scorekeeper ..... 12
  - Balls ..... 12
  - Meals ..... 12
  - Team Scoring ..... 12
  - Team Championship Tiebreaker ..... 12
  - State Awards ..... 13
  - Dress Code ..... 13
  - Line Calls ..... 13
  - NSAA Statement on Steroids ..... 13
- STATE TOURNAMENT INFORMATION ..... 14
  - Dates ..... 6
  - Location ..... 6
  - Travel Instructions ..... 14
  - Class A Entries ..... 14
  - Reporting ..... 14
  - Inclement Weather ..... 14
  - Schedule ..... 14
  - Classifications ..... 15
  - Class B District Tennis Assignments ..... 15
- FAN/SPECTATOR SUPPORT ITEMS..... 16

## Sportsmanship Bylaws & Approved Rulings

### 2.11 Penalties

2.11.3 Participant Ejections from Athletic Contests. Any participant ejected from a contest for unsportsmanlike conduct shall be ineligible for the next athletic contest at that level of competition and all other athletic contests at any level during the interim, in addition to the other penalties the NSAA or the school may assess.

**Approved Ruling 2.11.3** Any participant ejected a second time during a season from a contest for unsportsmanlike conduct shall be ineligible for the next two contests at that level of competition and all other athletic contests at any level during the interim, in addition to other penalties the NSAA or school may assess. Any participant ejected a third time shall be ineligible for the next three contests at that level of competition and all other athletic contests at any level during the interim, in addition to other penalties the NSAA or school may assess. When schools have students or coaches with multiple ejections, the school shall submit to the NSAA a written management plan on how they plan to remediate the problem.

2.11.4 Coach Ejections from Athletic Contests. Any coach ejected from a contest for unsportsmanlike conduct shall be ineligible to coach the next athletic contest at that level of competition and all other athletic contests at any level during the interim, in addition to the other penalties the NSAA or the school may assess.

**Approved Ruling 2.11.4** Coaches who are ejected will be required to successfully complete the NFHS Sportsmanship online course within 10 days of the ejection at the coaches' expense. Failure by an ejected coach to successfully complete the NFHS Sportsmanship online course within 10 days of the ejection will result in the coach being suspended from coaching in any further competition in that activity for the remainder of the season, including all NSAA end-of-season play (subdistricts, districts, playoffs, and state competition.) In those situations in which the ejection of the coach occurs near the end of the season or during the NSAA end-of-season play, the coach will be required to successfully complete the NFHS Sportsmanship online course before being able to coach the following season or year. Coaches who are ejected a second time will be required to sit-out the next two contests at that level, plus all other contests at other levels during the interim and successfully complete the NFHS Fundamentals of Coaching online course within 10 days of the ejection at the coaches' expense. Failure to successfully complete the NFHS Fundamentals of Coaching online course within 10 days of the ejection will result in the coach being suspended from coaching in any further competition in that activity for the remainder of the season, including all NSAA end-of-season play (subdistricts, districts, playoffs, and state competition.) In those situations in which the ejection of the coach occurs near the end of the season or during the NSAA end-of-season play, the coach will be required to successfully complete the NFHS Fundamentals of Coaching online course before being able to coach the following season or year.

### 3.3 General Regulations Governing Competition

3.3.11 Conduct and Sportsmanship. Member schools shall maintain proper crowd control and enforce the principles of good sportsmanship and ethics during all interscholastic contests. Failure to fulfill this obligation shall subject the school to penalties as provided in Article 2, Section 2.11, NSAA Bylaws Governing All Activities.

3.3.11.1 Conduct of Coaches and Athletes. Coaches and athletes shall conduct themselves in accordance with the playing rules of the sport contest and refrain from unsportsmanlike conduct during interscholastic competition. Failure to fulfill this obligation will subject the individual(s) to the penalties as provided in Article 2, Section 2.11, NSAA Bylaws Governing All Activities.

3.3.11.2 Definition of Unsportsmanlike Conduct. Unsportsmanlike conduct shall include the following: fighting, verbal abuse or dissent directed toward an official or opponent, racial or ethnic slurs, inappropriate comments or actions that may be construed as sexual harassment, profanity, obscene gestures, flagrant and violent fouls, taunting, trash talk, baiting, cheating, throwing or abusing equipment, inappropriate posters, physical intimidation or abuse of an official or opponent, and unauthorized leaving of a team bench area.

### **NSAA Sportsmanship Guidelines and Ejections**

1. Enforcement of the “sit-out rule” for ejections from high school contests for unsportsmanlike conduct is a responsibility of the member school. Failure to properly enforce this rule could result in other sanctions by the NSAA.
2. Administrators will be expected to promptly file a report with the NSAA whenever a participant or coach from their school has been ejected from any high school contest. Such filing must be done online under the AD login section of the NSAA webpage.
3. A participant or coach ejected from a contest for unsportsmanlike conduct shall be ineligible for the next athletic contest at that level of competition and any other athletic contest at any level during the interim.
4. Enforcement of the “sit-out rule” is expected to begin immediately, regardless whether it is regular-season or tournament play.
5. Any participant ejected a second time during a season from a contest for unsportsmanlike conduct shall be ineligible for the next two contests at that level of competition and all other athletic contests at any level during the interim, in addition to other penalties the NSAA or school may assess.
6. Any participant ejected a third time during a season from a contest for unsportsmanlike conduct shall be ineligible for the next three contests at that level of competition and all other athletic contests at any level during the interim, in addition to other penalties the NSAA or school may assess.
7. During the time of their “sit-out” suspension, athletes who are ejected for unsportsmanlike conduct may not suit up or participate, but it is the school’s discretion whether such athlete is able to travel with the team or sit on the team bench.
8. Coaches who are ejected for unsportsmanlike conduct may not coach in any contest or be present at the contest site during the time of their “sit-out” suspension. Coaches who are ejected will also be required to successfully complete the NFHS Sportsmanship online course within 10 days of the ejection. Failure to successfully complete the course will result in a suspension from coaching for the remainder of the season. In those situations in which the ejection of the coach occurs near the end of the season or during the NSAA end-of-season play, the coach will be required to successfully complete the NFHS Sportsmanship online course before being able to coach the following season or year.
9. Coaches who are ejected a second time in a season will be required to sit-out the next two contests at that level, plus all other contests at other levels during the interim. Coaches may not be present at the contest site during the time of their “sit-out” suspension. Any coach ejected a second time will also be required to successfully complete the NFHS Fundamentals of Coaching online course within 10 days of the ejection. Failure to successfully complete the course will result in a suspension from coaching for the

remainder of the season. In those situations in which the ejection of the coach occurs near the end of the season or during the NSAA end-of-season play, the coach will be required to successfully complete the NFHS Fundamentals of Coaching online course before being able to coach the following season or year.

10. If the ejection takes place in the final game of the season, the suspension will carry over to the following season.
11. When schools have students or coaches with multiple ejections, the school shall submit to the NSAA a written management plan on how they plan to remediate the problem.
12. Officials will be expected to file with the NSAA an ejection report for any ejection of a player or coach from a contest online. Any unusual situation that occurs prior to, during, or after a contest should also be reported.
13. Prompt reporting to the NSAA office by the official is necessary. Officials are asked to submit their electronic report or call the NSAA office by the day following the ejection.
14. Officials are asked to be specific in listing the reason(s) for an ejection.
15. Affiliated officials (officials registered from contiguous states) will also be required to perform this reporting function.
16. There is no appeal process for ejections for unsportsmanlike conduct.
17. The Executive Director shall reserve the right to consider the length of suspensions when some levels of competition are scheduled on an irregular basis (e.g., three weeks between regularly scheduled non-varsity contests).

**Cell Phones.** USTA regulations are very specific in that no electronic devices may be in operation on the court. A cell phone must be turned off and out of sight. (USTA Rule 30)



### **End of Season for Outside Participation**

#### Approved Ruling 3.1.1

A season begins on the first day of allowable practices for that sport, as designated in 3.1.1.2 below. The season officially ends with the conclusion of the State Championship in that sport. Students may not participate in outside group instruction or competition once the season officially begins, and outside group instruction or competition may not commence until the school team has been completely eliminated from further participation in the sport.

**3.2.3 Organized Practice.** Organized practice for any sport shall not be held during the school year between the close of a sports season and the opening day of practice for that sport the following school year.

◆ An organized practice in tennis shall mean more than three players under the direct supervision of a sponsor.

**3.2.6 Clinics.** During the season of a sport, student participation in a sports clinic, camp, or school shall not be permitted if the student is a member of the school's sport team in which instruction is being offered.

## **Participation.**

### Approved Ruling 3.3.7

1. In all athletic activities, teams wishing to enter a subdistrict, district, or state contest shall have participated in a minimum of five interschool varsity contests prior to the subdistrict, district, or state contest.
  - (a) Exceptions to the requirements for a team that has not participated in at least five interschool varsity contests would be considered if the team was unable to participate if weather conditions forced a cancellation of scheduled contests. Other extenuating circumstances would be considered by the Executive Director on a case-by-case basis.
2. In order to participate in a district or state tournament, a student is required to have been a member of the school's team for at least twenty school days prior to the first day of the subdistrict, district, or state tournament.
  - (a) Exceptions to the requirements for a student who is not a member of the school team for twenty school days would be considered if an individual was unable to participate because of illness, injury, or transfer from another high school. School, team, or game suspensions, regardless of the underlying cause, shall not be considered as exceptions to this participation rule.
3. In all athletic activities, students wishing to enter a subdistrict, district, or state contest shall have been available to participate in at least 30% of the school's varsity interschool contests prior to the subdistrict, district, or state contest.
  - (a) Exceptions to the requirements for a student who has not been available to participate in at least 30% of the school's varsity interschool contests would be considered if an individual was unable to participate because of illness, injury, transfer from another high school, or if weather conditions forced a cancellation of scheduled contests. School, team, or game suspensions, regardless of the underlying cause, shall not be considered as exceptions to this participation rule.
  - (b) When determining whether a student has been available for 30% of the school's varsity interschool contests, one would divide the number of varsity interschool contests for which the student was available by the school's total number of varsity interschool contests; all decimals .1 or above would be rounded up to the next higher whole number.
  - (c) The term "available to participate" means that the student was a bona fide member of the team, eligible to participate for the school at some level of competition in the sport, not suspended from participation in activities for violation of school, team, or NSAA rules, and not involved in outside participation activities (exception: Olympic Development Program or national team activities as approved by the NSAA.)
4. For situations pertaining to eligibility to participate in district or state contests that are not specifically addressed by these guidelines, the Executive Director shall have the authority to waive membership and participation requirements on a case-by-case basis.

## **Amateur Guidelines**

1. Cash Prizes Not Permitted. Cash prizes may not be given to amateurs for participation in tennis events. A prize cannot be cash or any award which may be surrendered for cash.
2. Merchandize Prizes. Value of prizes for amateurs in non-school events may not exceed \$250 per event. If an amateur were to participate in both the single and doubles event in a particular tournament, the amateur could accept a prize having a maximum value of \$250 for participation in the singles event and another prize having a maximum value of \$250 for participation in the doubles event.

3. Allowable Awards. Examples of allowable awards include, but are not limited to the following:
  - a. trophy or medal;
  - b. merchandise;
  - c. gift certificate;
  - d. membership or playing privileges at a tennis club;
  - e. tennis lessons;
  - f. scholarship;
  - g. tax deductible contribution by the Tournament Committee, with the amateur having the right to designate the recipient of the contribution.
4. Donation of Prize Money to School or Tennis Organization by Tournament Committee. If a player cannot accept prize money or a prize because the player is an amateur, then the Tournament Committee or sponsor has the discretion to give the prize money or prize to a high school, college, or the athletic department of a high school or college.

**3.5.1 Non-School Participation.** Any student, who participates in an athletic contest other than as a representative of his/her school during the season of the sport involved, becomes ineligible to represent his/her school in that sport for the remainder of its season.

#### **Eligibility for District/State Competition - Approved Ruling 3.5.1**

To be eligible to participate in a district and/or state contest a student shall have been a member of the school's team and shall have been available to participate in at least eighty percent (80%) of the school's scheduled interschool contests and not have missed more than twenty percent (20%) of the school's scheduled contests because of participating in non-high school competition.

- (a) The term "available to participate" means that the student was a bona fide member of the team, eligible to participate for the school at some level of competition in the sport, and not involved in outside participation activities (exception: Olympic Development Program or national team activities as approved by the NSAA.)
- (b) The term, "school's scheduled interschool contests," is defined as those contests which appear on the school's varsity schedule at the beginning of the season. An exception to this requirement will be considered if a student was unable to participate because of injury, illness, or had transferred from another high school.

#### **3.5.2 Individualized Instruction**

During the season of a sport, a student is permitted to take instruction from a person other than the high school coach at times other than scheduled high school practice sessions. However, such instructions shall not interfere with, nor be substituted for high school coaching, practice sessions, or contests.

*Approved Ruling: During a season of a sport, a student is permitted to take individual instruction from a person other than the high school coach. Group instruction, practices with outside teams, and tryouts for outside teams other than as a part of a college or university recruiting visit, however, are not permitted.*

#### **Approved Ruling 3.11.—3:11.12**

During the season of the sport, a school shall not permit a student who is not a member of the high school team, an adult, a college student, or alumni to participate in any practice session, drill, scrimmage, game, or contest in which a school team or an individual who is a member of a school team is involved.

This does not prevent a coach from being involved for the primary purposes of teaching and demonstrating skills, methods, or techniques.

**3.3.10 Supervision.** The superintendent, principal, or an authorized representative of the faculty shall accompany and supervise the team or individuals to all contests.

**3.3.10.1** Neither a team nor an individual shall be permitted to compete in a district tournament, playoff contest, or state contest unless the head coach, school administrator, or certified faculty member accompanies the team or individual(s).

**FUTURE DATES**

School Year	First Practice Date	First Contest Date
2010-2011	August 16	August 26
2011-2012	August 15	August 25

The 2009-2010 tennis season starts the first day of practice, Monday, August 17.  
The first 2009-2010 date for a contest is Thursday, August 28.  
The season ends with the state tournament, October 16.

**APPROVED RULINGS**

**Official Rules.** USTA Tennis Rules shall govern all NSAA-sponsored competition unless otherwise noted.

**Match Limit.**

No tennis team representing a member school shall participate in more than 16 regular season tennis contests. Participation in any tennis tournament/engagement shall count as one of the 16 permitted, including city and conference tournaments.

**Tiebreaker.** In compliance with the USTA, the NSAA shall authorize the 7-of-12 tiebreaker. This tie-breaker will go into effect when the set score reaches 6-all, and the procedure is as follows:

**Singles**

- ◆ A player, who first wins seven points shall win the game and the set, provided she leads by a margin of two points.
- ◆ If the score reaches six points all, the game shall be extended until this margin has been achieved.
- ◆ Numerical scoring shall be used throughout the tiebreak game.
- ◆ From the first point, each service shall be delivered alternately from the right and left courts, beginning from the right court.
- ◆ If service from a wrong half of the court occurs and is undetected, all play resulting from such wrong service or services shall stand, but the inaccuracy of station shall be corrected immediately when it is discovered.
- ◆ Players shall change ends after every six points and at the conclusion of the tiebreak game.
- ◆ The tie-break game shall count as one game for the ball change, except that, if the balls are due to be changed at the beginning of the tie-break, the change shall be delayed until the second game of the following set.

## **Doubles**

- ◆ In doubles the procedure for singles shall apply.
- ◆ The player whose turn it is to serve shall be the server for the first point.
- ◆ There after each player shall serve in rotation for two points, in the same order as previously in that set, until the winners of the game and set have been decided.

## **Rotation of Service**

- ◆ The player (or pair in the case of doubles) who served first in the tiebreak game shall receive service in the first game of the following set.

## **Inclement Weather Procedures – Regular Season**

Delays caused by inclement weather shall result in either cancellation of the match or in a postponement of the match as mutually agreed upon by the participating schools. An incomplete match refers to a match that was started but not completed. A cancellation will result in neither opponent recording a win/loss. If a match is postponed, the time and score shall be recorded when the match was stopped, who was serving and from which side. The postponed match shall be resumed at the point of suspension. Players shall not leave the facility until a decision has been made as to whether the match is to be cancelled or postponed. In the event of a postponement, agreement shall be reached as to the time and place for the suspended match to resume.

**Classification.** NSAA member schools shall be divided into two classes.

- ◆ The 28 largest schools registered for the sport are placed in Class A unless a school request to compete in Class A, with the remaining registered schools placed in Class B.
- ◆ A school will not be allowed to participate if they have not informed the NSAA of their intent to have a team by the time classification is announced.

## **Season Records.**

A coach will need to enter **every match** for **every player** on their team, **varsity or junior varsity**, whether the coach intends to enter the student(s) in the district/state meet or not. Coaches should plan to maintain the records for each of their players daily as matches are completed.

To do this,

- 1) Login to the NSAA website using your coach's passcode. You will enter results for each meet as they occur during the season.
  - a. Select and/or enter the meet and date for each match,
  - b. Choose the division at which your player competed via the drop down list,
  - c. Mark the match as a varsity or junior varsity match for your player,
  - d. Select your player's name via the drop down list,
  - e. Select the opponent's team via the drop down list,
  - f. Select the opponent(s) name(s) via the drop down list,
  - g. Type in the match score,
  - h. Click on Add Match.

When you submit this information for your player's matches, it will also appear on the opponent's schedules as well. If either coach edits the information posted, the change will appear in green to alert the other coach that a change has been made. Coaches need to communicate in regard to any changes made on an entry to ensure the accuracy of the entry.

When it is time to submit your entries for the District/State Tournament, you will login and indicate your entries for each division via the student drop down list. When students are selected, their season information will be electronically inserted to include all matches in which they participated (singles/doubles/varsity/junior varsity) this season.

### **District/State Entry Information.**

- ◆ NSAA Entry forms are accessed and submitted on-line. The Athletic/Activities director will give the certified coach the login for this activity. Go to the NSAA web site ([www.nsaahome.org](http://www.nsaahome.org)) and click on "School Login". Enter your login and go to "View/Edit your Form" to complete your entry form (detailed instructions can be obtained from the web site).
- ◆ Alternates must be listed. These alternates may compete in either singles or doubles competition.
- ◆ Coaches must complete the record information requested on the NSAA Entry Form for each singles player, doubles team and substitutes.
- ◆ Coaches need to maintain individual match records throughout the season to meet the seeding form requirements.
- ◆ Be sure to give accurate information for each specific player.
- ◆ If deceit is used in completing these season records, all team information will be disregarded for a seed.
- ◆ The tournament director may approve substitutions only.
- ◆ Schools may enter a competitor in either a doubles or singles division, but not both.
- ◆ **Any player that moves down a division (from #1 to #2) and enters the district/state tournament at #2 singles or #2 doubles, must have played at least 8 interschool contests in the division that they enter prior to the district/state tournament.**
- ◆ Each school may enter one individual in number one singles, one individual in number two singles, two individuals in number one doubles and two individuals in number two doubles.
- ◆ Entries must be identified as first singles, first doubles, second singles, and second doubles.
- ◆ Individuals may not be changed from singles to doubles, or visa versa, after entries have been received in the NSAA office.

**Alternate Players.** If an alternate player(s) is used, the NSAA must be notified before the seeding committee meeting. Exception to this ruling:

- ◆ If a player is injured or becomes ill immediately preceding his first match of the tournament and the tournament director receives notification of this illness/injury via a physician.
- ◆ If a player is withdrawn due to disciplinary action immediately preceding his first match and the tournament director receives notification by the school administration in writing.
- ◆ The school shall notify the NSAA immediately if a substitution is to be made.
- ◆ A copy of the administrator's letter to the tournament director shall also be sent to the NSAA.

**Seeding.** The high school season summary, as submitted as the entry, will be used to determine seeding.

Premise-The purpose of seeding is to separate top players from meeting each other in early rounds of a tournament.

Evidence of potential for success underlies all seeding. This evidence consists of the following items or any other criteria that will help in evaluating the potential the player has for winning the tournament:

- ◆ The most current results are given the most weight.
- ◆ Head-to-head encounters are more significant than indirect wins.
- ◆ Who a player defeats and loses to is more important than the length of win/loss percentages of a record (the quality of the opposition is the most important factor). On the other hand, exposure must also be taken into account. Players with short records have not given other players an opportunity to possibly defeat them.
- ◆ An upset loss of a top player should have a greater impact on raising the lower player than it does on lowering the top player.
- ◆ All matches, being of either a proset of eight games or more or two-out-of-three sets will carry equal weight for seeding.
- ◆ An individual must have played in a minimum of eight matches in singles to be considered for a singles seed.
- ◆ Individuals must have played in a minimum of eight matches in doubles to be considered for a doubles seed.

## CLASS B DISTRICT TOURNAMENT INFORMATION

**District Entries Due:** Monday, September 28

**Entries:** Each school shall be permitted to enter one entry in #1 Singles, one entry in #2 Singles, one entry in #1 Doubles and one entry in #2 Doubles.

**Date:** Friday, October 9

**District Assignments:** Class B schools will be divided into 4 geographical districts using an 8-person bracket. The tournament will be seeded by a meeting of participating coaches.

Persons appointed District Directors by the NSAA shall be responsible for the administration of the meet to include: facility costs, tournament balls and all pertinent costs in hosting the tournament. Directors may charge admission or assess a district entry fee to the participating schools to cover those tournament administrative costs.

**State Qualifiers:** The top 3 finishers in each division (#1 Singles, #2 Singles, #1 Doubles, #2 Doubles) at each district will qualify for the State Meet.

**District Awards.** A championship and runner-up team plaque will be awarded at each district. Individual medals will be presented to the first, second and third place finishers in each division.

## DISTRICT AND STATE INFORMATION

**Format.** Single elimination will be used with all matches on the basis of the best two-out-of-three sets.  
◆ On the first day of the tournament, if the matches are moved indoors, they will be played on the basis of two out of three sets using **NO-AD SCORING**.

**Warm-up.** A ten-minute warm-up for each match will be provided.

**Time Between Sets** – 2 minutes

**Time Between Matches.** A maximum of twenty minutes between first-day rounds will be provided.

**Meet Director.** The meet director is responsible for the conduct and management of the meet. The meet director shall make decisions regarding matters not specifically covered by the rules, in addition to having general supervision of other officials. The meet director's decision is final.

**Coaches.** In dual competition, invitational, conference tournaments and the district and state meets, coaching shall be permitted during a match with the following guidelines:

- ◆ Only the head coach of the high school as designated by that school's administration is allowed to coach.
- ◆ Coaching occurs at the "odd" game switch.
- ◆ Limited to sixty seconds.
- ◆ Player does not leave the court.
- ◆ Coach does not enter the court.
- ◆ No coaching is allowed on change-over during a tie-breaker.

Penalty: One game loss for infraction. Enforcement: Opposing coaches are responsible.

### **Conduct Rule.**

The tournament director has the authority to disqualify any player for any type of unsportsmanlike conduct in accordance with NSAA Sportsmanship Bylaws, on or off the court (at the entire tournament site).

◆ If a player is disqualified from a semifinal, final or consolation match, he/she will also forfeit any medal earned.

**Injury Time Out** – 3-minute when trainer arrives on the court, maximum total time is 15 minutes. After the 3-minutes of treatment, the player must play or retire. It is called a retirement not a default when it is because of illness or injury. **A player may get only one medical time out per injury.** (Please refer to your USTA Rule Book for full details.)

**Default Rule.** The tournament director has the authority to default a player for tardiness.

The following default rule shall apply during an NSAA state tennis tournament:

◆ A player, who finds that he will be delayed in arriving at the state tournament, through no fault of his own, must notify the tournament director. The director may delay the match starting time. If prior arrangements can be made to assure the player's arrival.

◆ If a player has an unexcused tardiness and has not contacted the tournament director, he shall be penalized one game for each five minutes delay for the first fifteen minutes absence from the time the match is called to begin and both the court and opponent are ready. After fifteen minutes, the tournament director will default the absent player.

◆ A defaulted match will be scored 6-0, 6-0.

**Scorekeeper.** Schools are asked to provide their own scorekeeper for their matches.

◆ A scorecard will be provided.

◆ At the completion of each match, the players will be required to review and sign their scorecard.

◆ The scorecard must then be turned in to the head scorer's table.

◆ If available, a scorekeeper will be assigned to the finals of all matches if available.

**Balls.** Balls will be provided at the start of each match and shall be used for the first two sets.

◆ New balls will be provided for the third set of matches.

**Meals.** Time will not be taken from the tournament schedule to allow all players to eat at the same time.

### **Team Scoring.**

First singles and first doubles. Team points will be awarded as follows:

--Four points for each advancement.

--An entry, which wins a second-round match after drawing a first-round bye, will receive eight points.

--Consolation match--one point

Second singles and second doubles. Team points will be awarded as follows:

--Two points for each advancement.

--An entry winning a second-round match after drawing a first-round bye will receive four points.

--Consolation match--one-half point

### **Team Championship Tiebreaker.**

First, the total number of sets played will be divided into the total number of sets won for the team's total entries, which determines each team's winning percentage. The best percentage will be declared champion.

If a tie still exists, the total number of games played will be divided into the total number of games won for the team's total entries. The highest percentage will be declared champion.

**State Awards.** Championship and runner-up team trophies and medals will be awarded in each class.

- ◆ Individual medals will be presented to the winner, runner-up, third place and fourth place players for each class in each division of play.
- ◆ Championship team head coaches will receive an award.



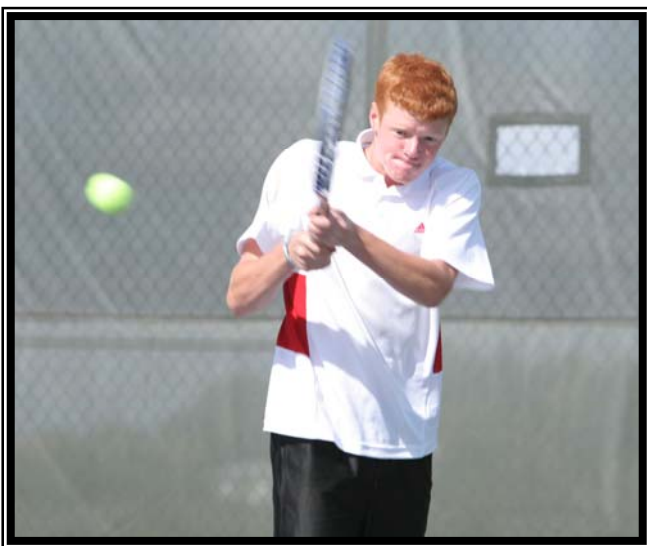
**Dress Code.** Your team represents you and your school so please see that your players are dressed in appropriate tennis attire (shorts, shirt, and tennis shoes). Participants must keep their uniforms on while in the competition area.

The tournament director has the authority to require a competitor who is wearing inappropriate attire to change before being allowed to compete.

**Line Calls.** Each player is responsible to call balls landing on their side of the net. When a match is played without officials, as is the district and state tournaments, the players are responsible for making decisions, particularly for line calls. Lines people will not/cannot be provided for each match.

*Tennis is a game that requires cooperation and courtesy from all participants. Instruct your players that a ball touching ANY part of the line is GOOD. A ball that cannot be called out is good. It is each player's responsibility to call all balls landing on, or aimed at the player's side of the net. If a ball cannot be called out with certainty, IT IS GOOD. When a player genuinely doubts an opponent's call, the player may ask, "Are you sure of your call?" If the opponent reaffirms that the ball was out, the call shall be accepted. If the opponent acknowledges uncertainty, the opponent loses the point. THERE SHALL BE NO FURTHER DELAY OR DISCUSSION.*

**NSAA Statement on Steroids.** The Nebraska School Activities Association (NSAA) and the National Federation of State High School Associations (NFHS), strongly oppose the abuse of anabolic steroids and other performance-enhancing substances by high school student-athletes. Such use violates legal, ethical and competitive equity standards, and imposes unreasonable long-term health risks.



The NSAA and the NFHS support prohibitions by educational institutions, amateur and professional organizations and governmental regulators on the use of anabolic steroids and other controlled substances, except as specifically prescribed by physicians for therapeutic purposes.



## STATE TOURNAMENT INFORMATION

**Dates:** Thursday, October 15 and Friday, October 16

**Location:** Harry & Gail Koch Family Tennis Center at Tranquility Park, 124th & Maple. Omaha

**Travel Instructions.** If traveling by interstate, take the Maple Street exit off of Interstate 680. Go west to 124<sup>th</sup> street, turn right to Tranquility Park.

**Class A Entries.** Due Date – Thursday, October 8.

TWELVE players will be seeded in each of the four divisions. The remaining players will be entered into a blind draw.

A seeding committee will meet the Monday morning prior to the state meet. The committee will be composed as follows:

- Three coaches representing Class A.
- Three coaches representing Class B.
- NSAA Tournament Director

### **Reporting.**

**Class A:** Schools are to report on Thursday, October 15 at 7:30 A.M. First-round match assignments will be announced, and play shall commence at 8:00 A.M.

**Class B:** Schools are to report on Thursday, October 15 at 1:00 P.M. First-round match assignments will be announced, and play shall commence as courts become available..

**Inclement Weather.** In case of inclement weather, matches will be indoors. Class A schools shall report to the Harry & Gail Koch Family Tennis Center at Tranquility Park at 7:30 A.M. and Class B schools at 1:00 P.M. Instructions will be given at that time.

### **Schedule**

#### **Thursday, October 15**

7:30 A.M.- Class A Coaches check in

8:00 A.M. – Class A First-Round begins

1:00 P.M. – Class B Coaches check-in

Class B First Round Matches to Commence as Courts Become Available.

#### **Friday, October 16**

9:00 A.M.—Class A & B Semifinal matches

1:00 P.M.--Class A & B Consolation matches

1:00 P.M.—Class A & B Championship Finals

Specific instructions for the tournament will be sent to schools the week prior to the state meet. The entire schedule of matches will appear on the NSAA homepage immediately following the seed meeting, [nsaahome.org](http://nsaahome.org).

# 2009 Boys Tennis Classifications

## Class A

1. Bellevue East
2. Bellevue West
3. Columbus
4. Elkhorn
5. Fremont
6. Grand Island
7. Kearney
8. Lincoln East
9. Lincoln High
10. Lincoln NE
11. Lincoln No. Star
12. Lincoln SE
13. Lincoln SW
14. Millard North
15. Millard South

16. Millard West
17. Norfolk
18. North Platte
19. Omaha Benson
20. Omaha Bryan
21. Omaha Burke
22. Omaha Central
23. Creighton Prep
24. Omaha North
25. Omaha NW
26. Omaha South
27. Om Westside
28. Papillion-  
La Vista
29. Papillion-  
La Vista South

## Class B

1. Adams Central
2. Alliance
3. Beatrice
4. Grand  
Island CC
5. Hastings
6. Hershey
7. Holdrege
8. Kearney  
Catholic
9. Lexington
10. Lincoln  
Christian
11. Lincoln Pius X
12. McCook

13. Mt. Michael  
Benedictine
14. Nebraska City
15. Omaha  
Brownell- Talbot
16. Omaha Gross
17. Omaha Roncalli  
Catholic
18. Omaha Skutt  
Catholic
19. Ralston
20. Scottsbluff
21. South Sioux City
22. Waverly
23. York

## Class B District Tennis Assignments

### **B-1 at Woods Tennis Center, Lincoln**

**Friday, October 9, 2009**

**Director: Bill Rice, Lincoln Pius X**

Beatrice  
Nebraska City  
Lincoln Pius X  
Lincoln Christian  
Waverly  
Ralston

### **B-2 at Omaha Skutt**

**Friday, October 9, 2009**

**Director: Mike McMahon**

Omaha Roncalli Catholic  
Omaha Skutt Catholic  
Omaha Gross Catholic  
Omaha Brownell-Talbot  
Elkhorn Mount Michael  
South Sioux City

### **B-3 at Harmon Park, Kearney**

**Friday, October 9, 2009**

**Director: Rick Petri, Kearney Catholic**

York  
Adams Central  
Grand Island Central Catholic  
Hastings  
Kearney Catholic  
Holdrege

### **B-4 at Lexington**

**Friday, October 9, 2009**

**Director: Kyle Hoehner**

Lexington  
McCook  
Hershey  
Alliance  
Scottsbluff



## Fan/Spectator Support Items

In the Chart below, ONLY those items marked “Yes” will be allowed as fan/spectator support items at all NSAA Sub-District, District, State Playoffs and State Championships.

Sportsmanlike vocal cheering and support from the team bench area are encouraged. The items indicated on this page are for use by all fans/spectators.

**Regulations listed are subject to facility restrictions.**

<b>SPORT</b>	<b>BA</b>	<b>BB</b>	<b>CC</b>	<b>FB</b>	<b>GO</b>	<b>SO</b>	<b>SB</b>	<b>SW</b>	<b>TE</b>	<b>TR</b>	<b>VB</b>	<b>WR</b>
Balloons	Yes	No	Yes	Yes	Yes	Yes	Yes	No	Yes	Yes	No	No
Banners on wall except welcome or corporate sponsor	Yes	Yes	Yes	Yes	Yes	Yes	Yes	Yes	Yes	Yes	Yes	Yes
Confetti/shredded paper	No	No	No	No	No	No	No	No	No	No	No	No
Hand held signs	Yes	Yes	Yes	Yes	Yes	Yes	Yes	Yes	Yes	Yes	Yes	Yes
Laser light/pointer/flashing objects	No	No	No	No	No	No	No	No	No	No	No	No
Miniature sports balls, objects or candy thrown into crowd	No	No	No	No	No	No	No	No	No	No	No	No
Megaphones (elected cheerleaders only)	Yes	Yes	Yes	Yes	NA	Yes	Yes	Yes	Yes	No	Yes	Yes
Artificial noise makers, (included but not limited to horns, cow bells, bells, buzzers, clickers, thunder sticks, rattles, instruments not part of a band)	No	No	No	No	No	No	No	No	No	No	No	No
Whistles	No	No	No	No	No	No	No	No	No	No	No	No
Shirts on fans (required)	No	Yes	No	No	No	No	No	No	No	No	Yes	Yes
Team Introduction Run-throughs or Break Away Banners	Yes	Yes	Yes	Yes	NA	Yes	Yes	Yes	Yes	Yes	Yes	Yes
Pompoms, shakers, spirit towels	Yes	Yes	Yes	Yes	Yes	Yes	Yes	Yes	Yes	Yes	Yes	Yes
Prerecorded music that has been approved by the Host Administration may be played during pre-contest warm ups provided that a high school band is not available to play during that time.	Yes	Yes	Yes	Yes	NA	Yes	Yes	Yes	No	No	Yes	Yes
School bands	Yes	Yes	Yes	Yes	NA	Yes	Yes	Yes	Yes	NA	Yes	Yes
Air horns/sirens	No	No	No	No	No	No	No	No	No	No	No	No
Cannons/muskets/guns/fireworks	No	No	No	No	No	No	No	No	No	No	No	No
Carried school flags <b>(Running/taunting prohibited)</b>	Yes	Yes	Yes	Yes	Yes	Yes	Yes	Yes	Yes	Yes	Yes	Yes
Live animals	No	No	No	No	No	No	No	No	No	No	No	No

**Key:** BA-Baseball, BB-Basketball, CC-Cross Country, FB-Football, GO-Golf, SO-Soccer, SB-Softball, SW- Swimming & Diving, TE-Tennis, TR-Track & Field, VB-Volleyball, WR-Wrestling, NA-Not Apply